

UK School Closures

What you need to know



Schools in England with a certain type of concrete called RAAC Concrete will have to close immediately, unless they put in place the appropriate safety measures, it was announced on 31st August 2023.



104

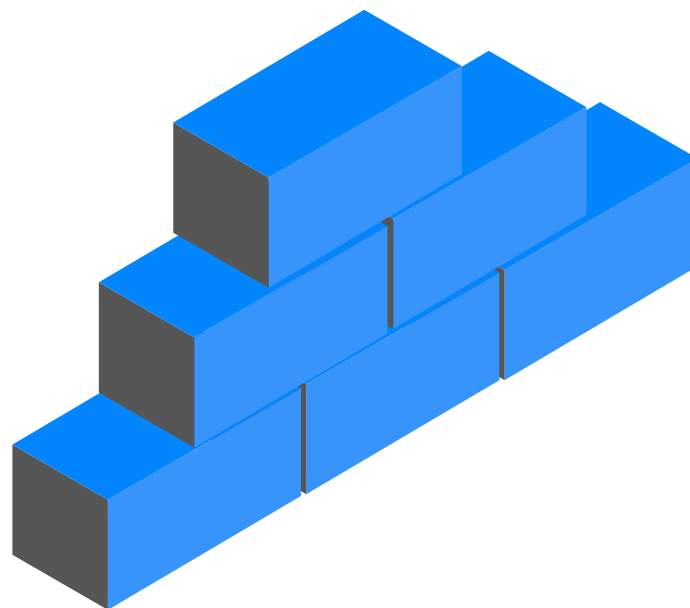
Schools are being forced to close over building safety fears, which follows a further 50 that already had buildings affected earlier this year.

It comes after a report published in July 2023 by the National Audit Office identified 572 schools may have the material present.

What is reinforced autoclaved aerated concrete (RAAC)?

Reinforced autoclaved aerated concrete (RAAC) is a lightweight concrete that was used widely in school construction during the 1950s through to the 1990s.

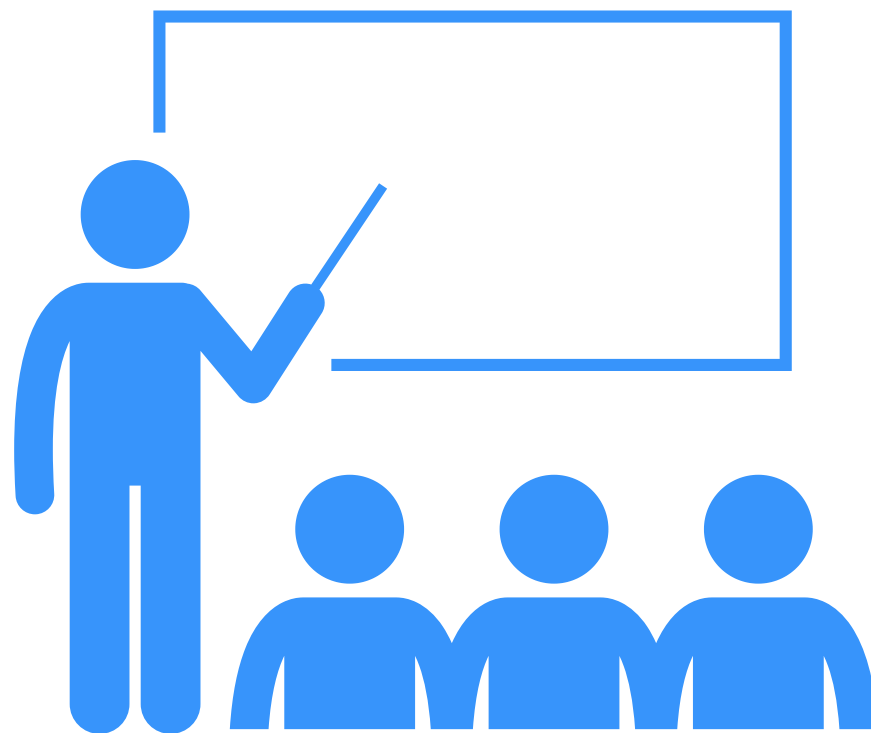
It has since been found prone to collapse. It was mainly used in roof, floor, cladding and walls but not just in public sector buildings.



**What does this really mean
for Schools and pupils
preparing to return in
September 2023?**

Schools with unsafe buildings will not be able to re-open until safety measures have been implemented which may mean completely closing buildings, partially closing buildings and relocating to other areas.

**Children may be located to other sites
or into temporary classrooms.**



Children may need to return to remote learning from home if their school is one of those forced to close.



**What measures are being
put in place?**



- **All settings known to contain RAAC will be assigned a dedicated DfE caseworker who will work with the responsible body to assess the site's particular needs and help them put in place individual solutions.**
- **This could include using other on-site buildings, local spaces, safety measures in the affected area and, in some cases, erecting temporary buildings.**

- **Settings with suspected RAAC will be brought forward for surveying. The government has committed to having surveyed all schools affected 'within weeks'**
- **If RAAC is confirmed, the government will ensure appropriate rapid action is taken.**
- **This could include providing funding to remove any immediate risks and, where necessary, arranging temporary buildings to be put in place.**

**Guidance for RAAC
school closures is
being regularly
updated
find more information
on gov.uk**

**We're here to help!
if you're struggling to
understand new guidance, get
in touch for a free consultation**



www.safety-smart.co.uk