

Preventing Slips and Trips In Autumn

**As the seasons shift and autumn settles in,
so do new health and safety risks—
especially slips, trips and falls. With wet
weather, falling leaves, and darker
mornings and evenings, this time of year
brings a spike in incidents across
workplaces**



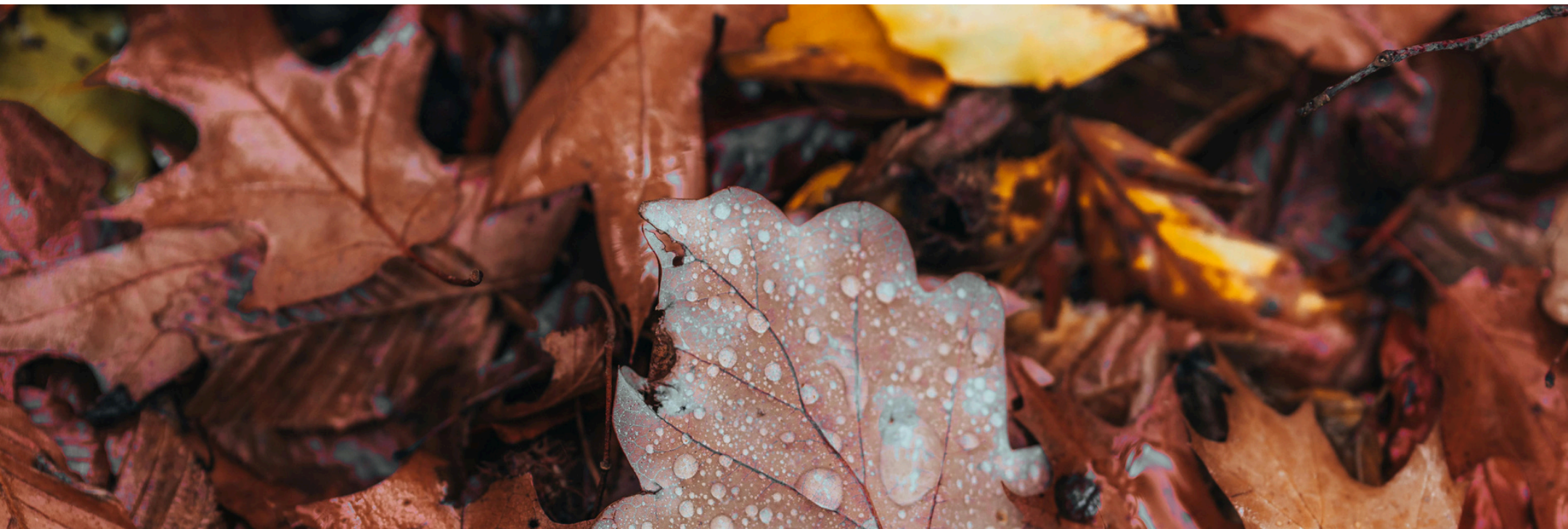
Manage Wet Weather Hazards

- **Rainwater at entrances** can turn floors into slip zones. Use absorbent entrance mats and ensure they're long enough to dry footwear properly
- **Encourage regular mopping** of wet areas, especially around doorways, corridors, and communal spaces.
- **Use wet floor signage promptly** and remove it as soon as the hazard is dealt with — leaving signs out too long can reduce their effectiveness.



Clear Leaves Regularly

- **Wet leaves** are as slippery as ice. Clear them daily from walkways, car parks, and steps.
- **Assign responsibility** for regular grounds maintenance, particularly in high footfall areas.
- **Consider gritting surfaces** when frost or icy mornings are expected.



Improve Lighting in Low-Light Conditions

- **Check that all external and internal lighting is fully working** including motion sensors and timer-controlled systems.
- **Dim or broken lights** should be replaced immediately.
- **Poor lighting can make hazards hard to spot**, particularly on staircases, outdoor paths, or uneven surfaces.



Encourage Appropriate Footwear

- **Promote the use of non-slip footwear**, especially for staff working outdoors, in warehouses, kitchens, or cleaning roles.
- **For customer-facing or office-based teams**, encourage shoes with good grip during commuting and transitions between buildings.



Inspect Walkways and Surfaces

- **Identify and repair** cracked paving, loose floor tiles, or worn carpet edges.
- **Install handrails** on outdoor steps or slippery internal floors
- **Ensure cables and equipment** are kept off walkways and stored safely.

Review and Refresh Your Risk Assessments

- **Seasonal changes should trigger a review of existing risk assessments.**
- **If new hazards have emerged, update procedures accordingly.**
- **Ensure all staff are aware of changes and receive seasonal safety briefings.**

Need Support?

We're here to help!



www.safety-smart.co.uk